



WALLGOLDFINGER | ENGAGE

## GET ENGAGED

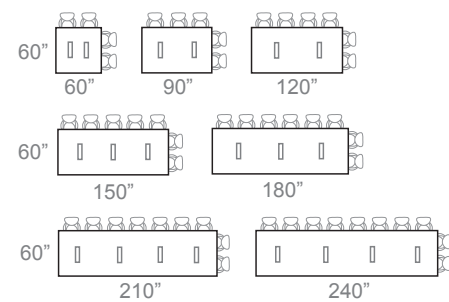
WallGoldfinger Furniture's Engage conference table line and credenza meld modern design with function. Featuring a thin edge, slender pedestal base, hidden technology and diverse materials, Engage is the perfect solution for any conference room design. Built by the finest craftspeople in our state-of-the-art factory in beautiful Newburyport, Mass., this elegant, high-quality conference table and credenza are sure to engage your team.



## BENEFITS

- A thin profile for the ultimate in modern aesthetics and leg room
- A pristine tabletop surface thanks to WallGoldfinger Furniture's exclusive *Covert Glide* – an under table, unseen power and data system providing the ultimate in table aesthetics
- Diverse tabletop material options to match any office design
- An *Overlay Edge* that is both elegant and practical as its reverse knife design helps protect both the table edge and chair arms from damage
- A slender, 4-inch wide, modern base capable of handling wire management

## SPECIFICATIONS



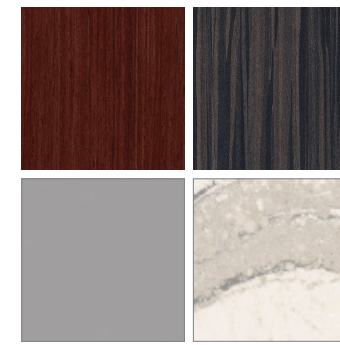
Choose a 5' width and lengths from 5' to 20'



Enjoy a thin tabletop, 28 inches of leg and chair space from floor to the underside of the table and Engage's exclusive 4-inch wide pedestal base design with wire management



Experience WallGoldfinger's *Overlay Edge*, which helps chair arms ease under the table edge with its reverse knife design



Choose from diverse top surfaces, including veneer, plastic laminate, glass, cast acrylic, stone and engineered quartz



Novel *Covert Glide* technology offers convenient access to power and data while remaining out of sight under the table



Enhance your space with the Engage credenza



# DESIGN

The Engage has been designed to meet today's conference room needs. It features a thin top and narrow bases popular in today's corporate furniture industry, but is carefully crafted to handle wire management for essential power/data needs. The Engage's base additionally offers the modern look of two materials, be they metal and veneer or lacquer and veneer, forming an aesthetically pleasing angle and clever layered look. Finally, the table's thin edge features a reverse knife design to reduce damage to chair arms and an overlay option to match any room design.



# BENEFITS

- A thin edge profile offering the ultimate in aesthetics and leg room
- A reverse knife edge to help chair arms ease under the table edge
- Diverse overlay tabletop options from glass to stone to resins to match any room design
- A slender, 4-inch pedestal base with an attractive angle and two material types to diversify your design while also offering wire management
- A double wide, 8-inch interior base for increased wire management and to cover floor cores

## BASES



Thin, 4-inch wide (by 24" deep) pedestal base with wire management access panel



Wider, 8-inch center pedestal base for with access panel for additional space for wire management and to cover floor cores



Thin-, 4-inch pedestal base with 4"x10" add-on, removable box for additional space for wire management and to cover floor cores

## OVERLAY REVERSE KNIFE EDGE



Shown in veneer and solid wood



Shown in stone and solid wood

# MATERIALS

WallGoldfinger Furniture is a leader in sourcing veneer, stone, glass and more. Engage tables are available in all of these materials as well as engineered quartz, plastic laminates and cast acrylic. Combine an overlay material like glass with a lacquer edge and a lacquer and veneer base for a custom look. Whatever you can envision, Engage can deliver with style.



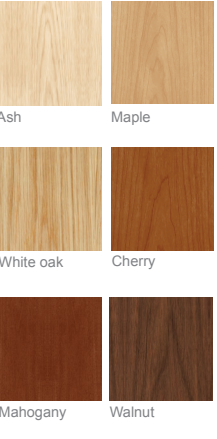
# BENEFITS

- The most diverse materials available to meet every room design
- Unique opportunities to create material combinations in both the overlay top and two-toned base for a truly custom look
- The highest quality veneer and stone sourcing and lay-up for quality in your conference room
- Lightweight and durable engineered top materials from quartz to cast acrylic to add a modern, sometimes colorful, twist to your meeting space
- Limitless custom options to accommodate your unique color and design palette

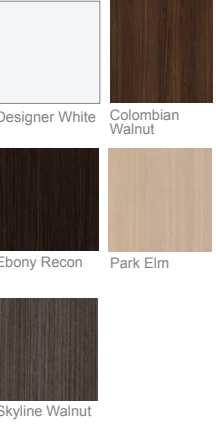
## VENEER



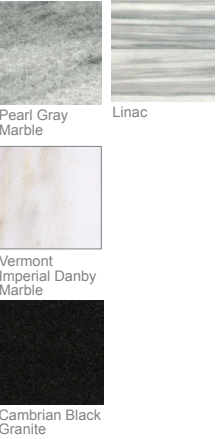
## SOLID WOOD EDGES



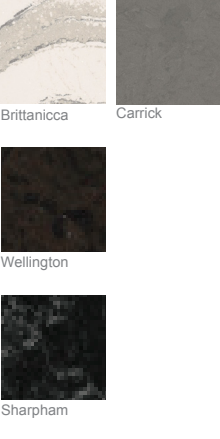
## PLASTIC LAMINATE



## STONE



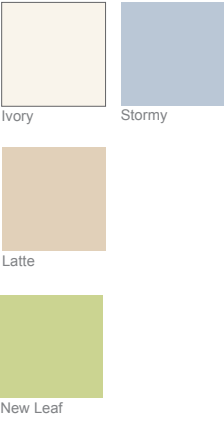
## ENGINEERED QUARTZ



## GLASS



## CAST ACRYLIC



## OPAQUE LACQUER



## METAL - CLADDING

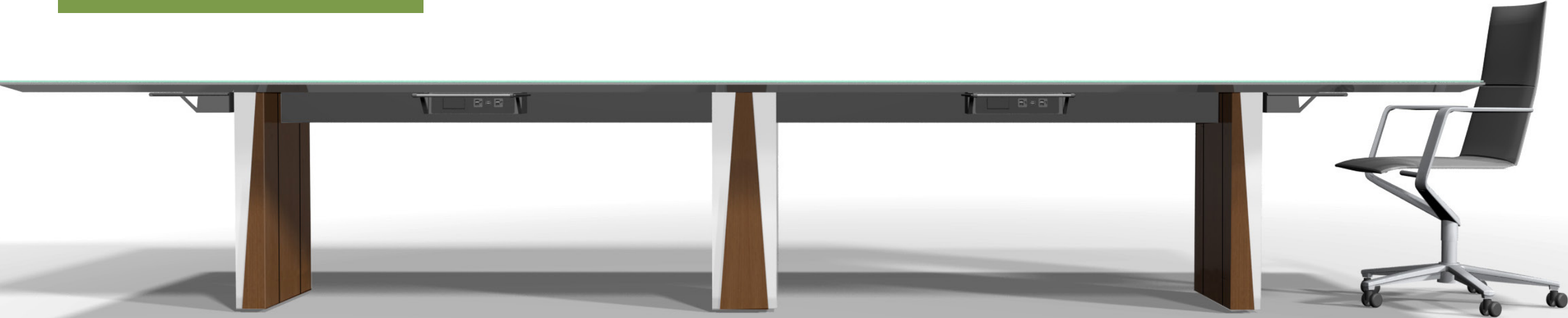


# TECHNOLOGY

WallGoldfinger Furniture's exclusive *Covert Glide* is one of a kind. Designed by in-house engineer Chris Howe, the *Covert Glide* is an under table power system that allows power and data boxes to be completely unseen from a standing or sitting position. The *Covert Glide* is built fastened under the table covertly out of sight. Pull the unit out for use; when you're all plugged in, squeeze the handle to release the unit; and it automatically retracts – glides, if you will – back under the table. The system allows for several major benefits, including a thin table edge, a pristine tabletop surface and more leg room than many other power options, such as apron power and drawers that necessitate a wide table apron. If convenience, cost and aesthetics matter to you, Engage with its *Covert Glide* system are the answer.

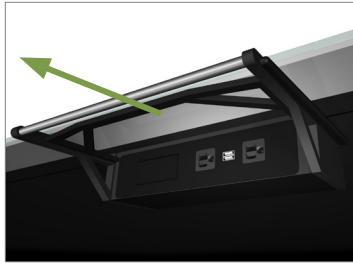
## BENEFITS

- Enjoy a pristine tabletop surface free of hatch lids or other tabletop power/data boxes thanks to WallGoldfinger Furniture's exclusive *Covert Glide*
- Unlike apron power or power drawers, experience increased leg room and chair arm space thanks to the *Covert's* unique under table design
- Easily plug in your devices thanks to the *Covert's* locking technology in the extended position
- Effortlessly release the *Covert* under the table
- Safely manage wires unseen under the table and within the Engage's slender bases with removable access panels

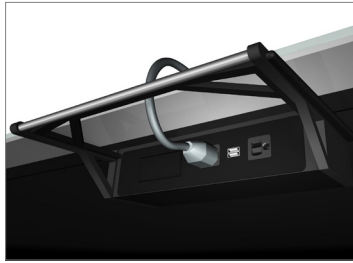


## COVERT GLIDE

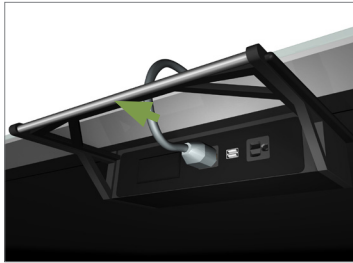
### USAGE



Pull out to use. Unit automatically locks in place.



Plug in.

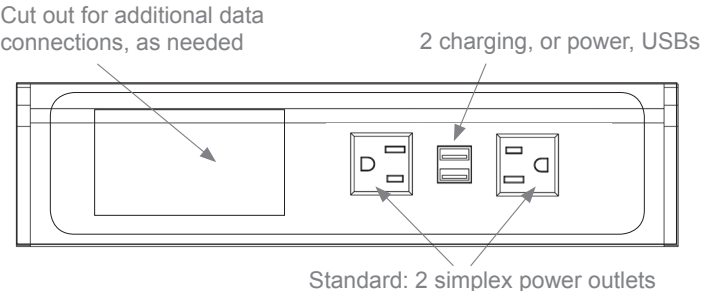
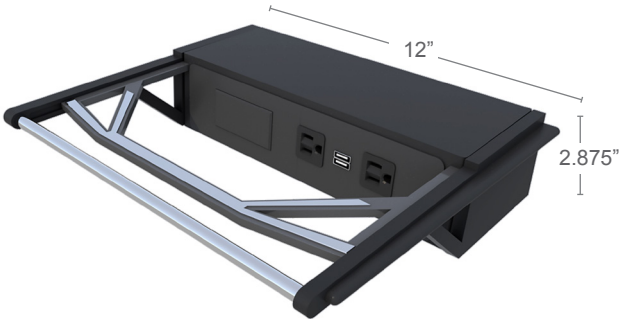


Squeeze handles together to release.



Let go and the *Covert Glide* automatically retracts under table.

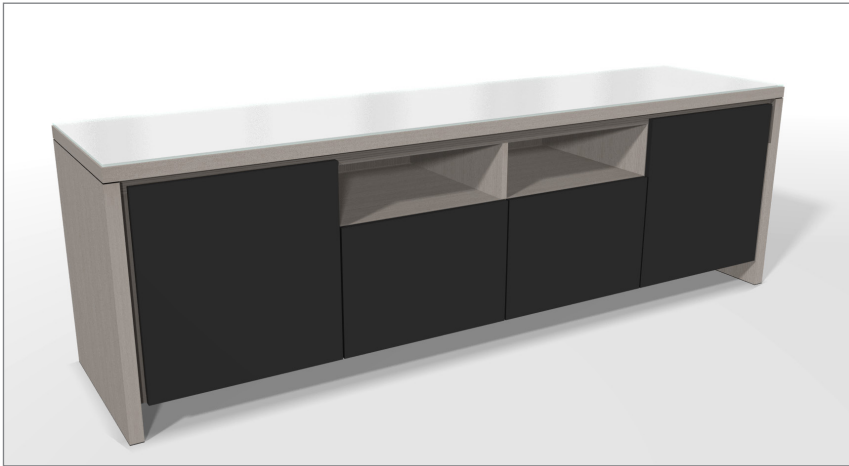
### SPECIFICATIONS





# ENGAGE CREDENZA

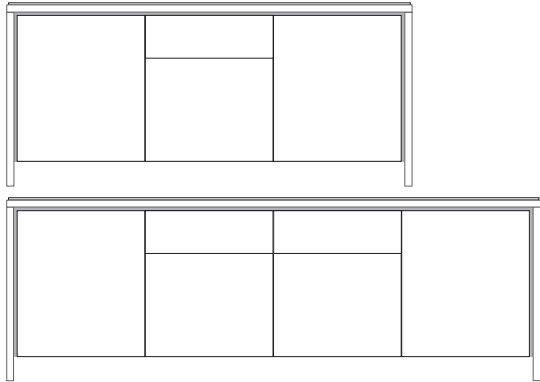
WallGoldfinger Furniture's Engage conference table line features a complementary credenza that offers diverse materials and interior components sure to fit the look and function of your meeting spaces. Pair your Engage table with an Engage credenza for a stand-out look – and extra storage – in your corporate space.



## BENEFITS

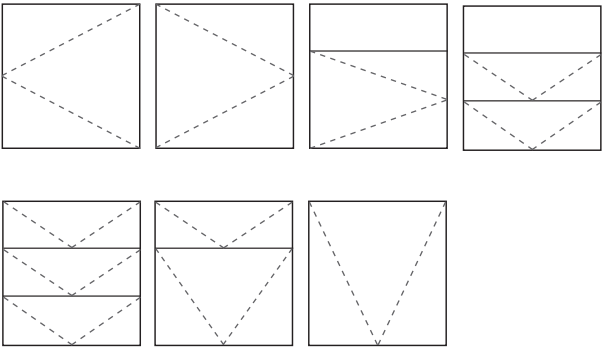
- Two convenient sizes for rooms big and small
- A complementary design to the Engage conference table
- Incredibly diverse materials to create nearly any look
- Diverse interior components sure to meet your conference room storage, AV and waste disposal needs
- An easier-to-order, lower price credenza (as compared to custom options)

## SIZES



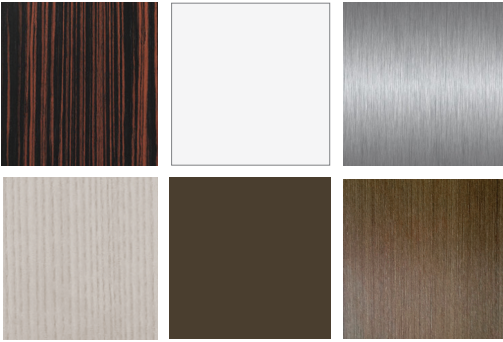
6' and 8' foot lengths, 24" deep, 29" high (plus top material)

## INTERNAL COMPONENTS

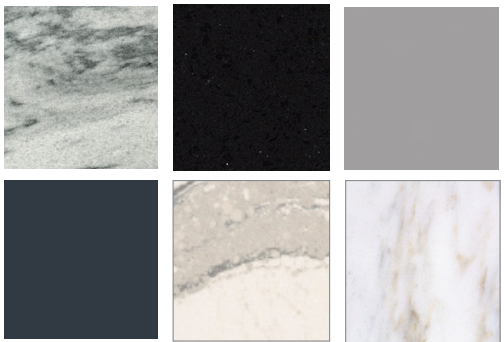


Choose your interior components, including drawers, cabinets, waste and recycling receptacles, and ventilation cutouts and space for AV racks (supplied by others)

## MATERIALS



Choose veneer and/or lacquer from pages 6-7 to match your conference table design



Add a top surface, such as glass, cast acrylic, stone, and engineered quartz from pages 6-7, if you so choose

## TABLE LINES

### ENGAGE



### FUSE



### ARBOR



### SUMMIT



## CREDENZA LINES

### ENGAGE



### FUSE



### CUSTOM

Let your imagination run wild.



**WALLGOLDFINGER**  
FURNITURE

a division of Mark Richey Woodworking

168 North Main Street, PO Box 187

Northfield, VT 05663

T. 802.278.5800

[sales@wallgoldfinger.com](mailto:sales@wallgoldfinger.com)

[www.wallgoldfinger.com](http://www.wallgoldfinger.com)